

MATCH PERFORMANCE REPORT

# Test Video

Recorded **Saturday, June 20, 2026** · Duration **19:25** · **1,840** frames analyzed



**4**

PLAYERS  
Detected

**289**

TOTAL SHOTS  
Classified

**65**

RALLIES  
Detected

**58%**

ACTIVE PLAY  
Of Session

## OVERALL PERFORMANCE SCORE

Weighted across footwork · balance · shot accuracy · reaction speed



**60**

vs Avg Player: **-5**



## ANALYSIS

## Performance Score



## SESSION OVERVIEW

## Key Metrics



## AI COACH


## Session Insight


Moderate-intensity session (58% active play, 4 player(s)). Increasing rally tempo will build match conditioning. Shot profile: 56% volleys. Dinks: 27 · Drives: 39 · Drops: 2 · Volleys: 161. Consistent pace (avg  $\approx$ 1 mph, max  $\approx$ 3 mph est.). Developing a harder drive on short balls would create more winning opportunities. 65 rallies detected — longest 266 frames, averaging  $\sim$ 4.4 shots/rally. Long rallies indicate strong consistency — focus on speed-up opportunities to close out points. Biomechanics: knees nearly straight 47.4% of the time. Bend knees to 130-160° for better balance and explosive lateral movement. Top moment: "Rally #1" at 1s. Keep logging your sessions to build a long-term performance profile.





## DETECTION

## Players Detected

**Player 1**  
Team A  
86% confidence

**Player 2**  
Team A  
67% confidence

**Player 3**  
Team B  
86% confidence

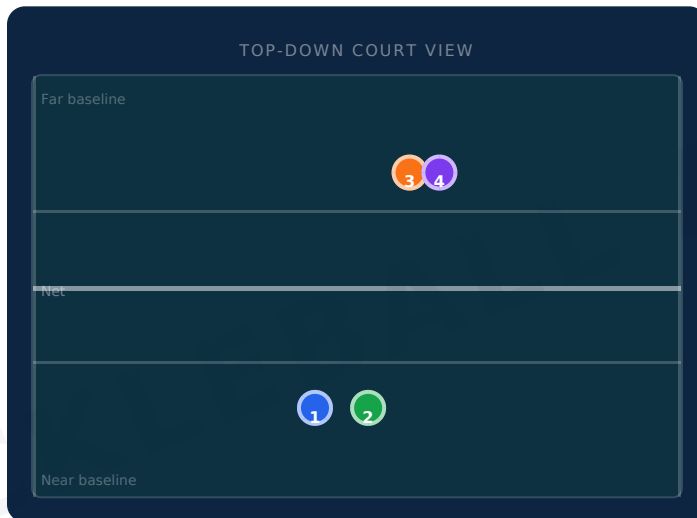
**Player 4**  
Team B  
89% confidence

## SPATIAL ANALYSIS

## Court Positioning

PLAYER	COURT SIDE	LATERAL RANGE	FRAMES
<span>P1</span>	Center Court	38%	827
<span>P2</span>	Center Court	33%	556
<span>P3</span>	Center Court	38%	863
<span>P4</span>	Center Court	43%	194

Longest Rally: 266 frames · Avg Players/Frame: 1.33



## SHOT ANALYSIS

## Shot Type Breakdown

Dinks	<div style="width: 9%;"></div>	27 (9%)
Drops	<div style="width: 1%;"></div>	2 (1%)
Drives	<div style="width: 13%;"></div>	39 (13%)
Serves	<div style="width: 8%;"></div>	24 (8%)
Returns	<div style="width: 12%;"></div>	36 (12%)
Volleys	<div style="width: 56%;"></div>	161 (56%)

## SHOT EVENTS

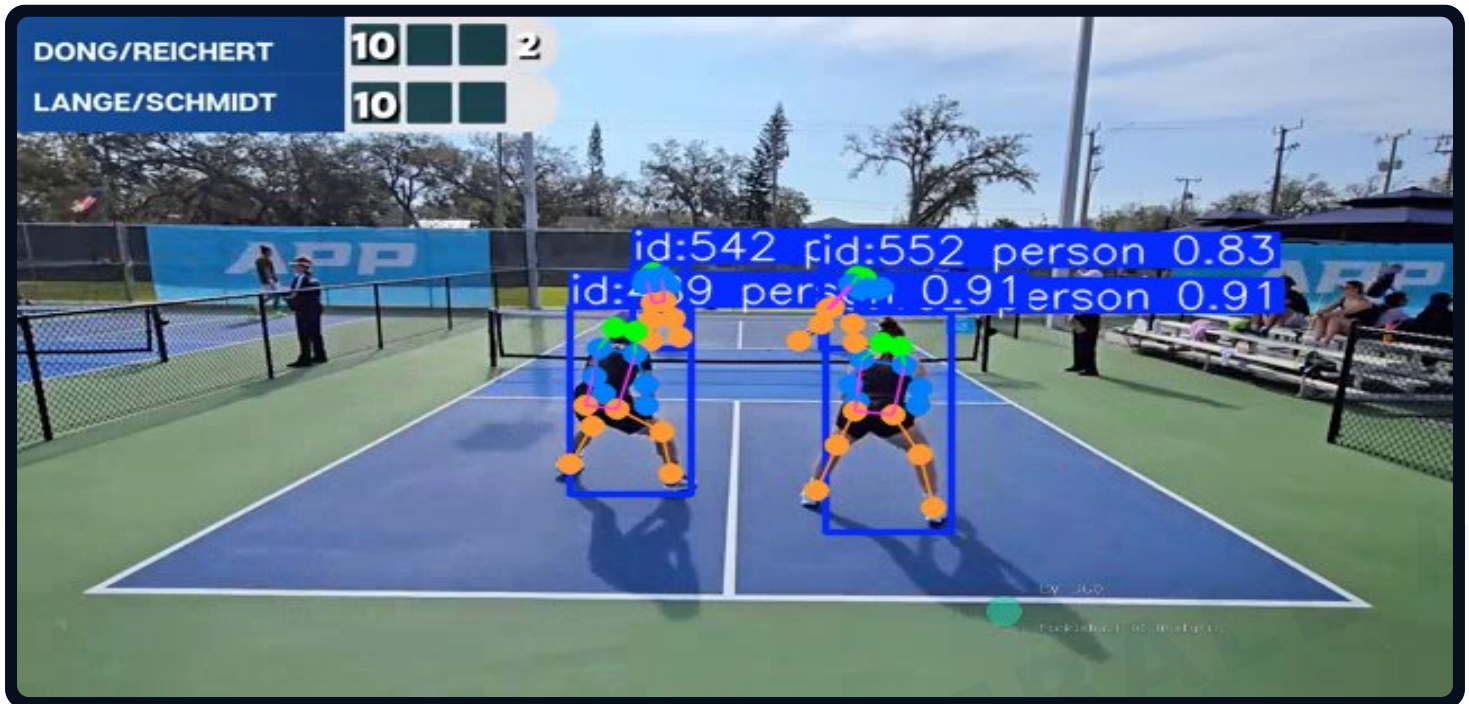
Total events	289
Avg velocity	0.026
Burst shots	0
Total shots	289





## BIOMECHANICS

## Body Mapping &amp; Posture Analysis



## Player 1

Review

827 frames with pose data

Knee Position **Good** (163°)Stance Width **Too Wide**Back Alignment **Good**Weight Balance **Unbalanced**

Shots  
**108 total — Dinks: 15, Drops: 1,  
 Drives: 16, Serves: 4, Returns:  
 15, Volleys: 57**

- Stance too wide
- Weight shifted to one side

- Narrow stance slightly for quicker lateral movement
- Center your weight evenly over both feet



## Player 2

Needs Work

556 frames with pose data

Knee Position **Too Straight** (170°)Stance Width **Too Wide**Back Alignment **Good**Weight Balance **Unbalanced**

Shots  
**66 total — Dinks: 4, Drives: 3,  
 Volleys: 59**

- Knees too straight / locked
- Stance too wide
- Weight shifted to one side

- Bend knees more — aim for 130-160° for an athletic ready position
- Narrow stance slightly for quicker lateral movement



CV360

PICKLEBALL AI · CONFIDENTIAL

863 frames with pose data

194 frames with pose data

Knee Position **Good (166°)**

Stance Width **Too Wide**

Back Alignment **Good**

Weight Balance **Unbalanced**

Shots **59 total — Dinks: 8, Drives: 10, Returns: 5, Volleys: 36**

- Stance too wide
- Weight shifted to one side
- Narrow stance slightly for quicker lateral movement
- Center your weight evenly over both feet

Knee Position **Good (165°)**

Stance Width **Too Wide**

Back Alignment **Good**

Weight Balance **Unbalanced**

Shots **56 total — Drops: 1, Drives: 10, Serves: 20, Returns: 16, Volleys: 9**

- Stance too wide
- Weight shifted to one side
- Narrow stance slightly for quicker lateral movement
- Center your weight evenly over both feet

CV 360 - PICKLEBALL AI



## BIOMECHANICS

## Movement Summary (All Players Combined)

KNEE ANGLES		ELBOW & STANCE	
Average	165.8°	Avg elbow angle	143.2°
Range	77.8° - 180°	Avg stance ratio	1.95
Ready position	50.6% of frames	Range	0.1 - 4.99
Straight (poor)	47.4%	Avg arm reach	5% of height

## EVENTS

## Session Highlights

#	EVENT	TIME	DESCRIPTION
1	Rally #2	00:25	22 shots · 58 active frames
2	Rally #12	05:52	14 shots · 43 active frames
3	Rally #39	16:29	12 shots · 65 active frames
4	Rally #40	17:18	10 shots · 44 active frames
5	Rally #15	06:54	10 shots · 16 active frames
6	Rally #24	10:38	9 shots · 18 active frames
7	Rally #23	10:26	6 shots · 18 active frames
8	Rally #14	06:37	6 shots · 16 active frames
9	Rally #17	08:27	7 shots · 17 active frames
10	Rally #32	13:55	6 shots · 19 active frames



## TIMELINE

## Scene Analysis

#	START	END	TYPE	DURATION	PLAYERS
1	00:00	00:24	Active Play	24.1s	3
2	00:26	00:37	Transition	11.4s	0
3	00:38	00:55	Active Play	17.1s	2
4	00:55	00:59	Transition	3.8s	0
5	01:00	01:05	Active Play	5.7s	2
6	01:06	01:09	Transition	3.2s	0
7	01:10	01:24	Active Play	14.6s	2
8	01:25	01:28	Transition	2.5s	0
9	01:28	01:30	Active Play	1.9s	2
10	01:31	01:39	Transition	8.2s	0
11	01:40	02:11	Active Play	31s	2
12	02:11	02:14	Transition	3.2s	0
13	02:15	02:38	Active Play	22.8s	2
14	02:39	02:43	Transition	4.4s	0
15	02:44	03:01	Active Play	17.1s	3
16	03:01	03:06	Transition	5s	0
17	03:07	03:12	Active Play	5s	2
18	03:13	03:22	Transition	9.5s	0
19	03:23	03:24	Active Play	1.3s	2
20	03:25	03:31	Transition	6.3s	0
21	03:32	03:48	Active Play	16.4s	2
22	03:49	03:53	Transition	3.8s	0
23	03:53	03:56	Active Play	3.2s	2
24	03:57	04:02	Transition	5.1s	0
25	04:03	04:51	Active Play	48.1s	2



## TRAJECTORY

## Ball Path Across the Court

TIME: ● Start ● Early ● Mid ● End Showing 126 of 500 ball detections

## SHOT LOG

## Shot Events (showing 30 of 200)

#	TIME	SHOT TYPE	PLAYER	EST. SPEED
1	00:03	Volleys	P1	—
2	00:09	Volleys	P1	—
3	00:25	Returns	P2	~1 mph
4	00:26	Volleys	P2	~1 mph
5	00:27	Returns	P2	—
6	00:27	Returns	P2	—
7	00:29	Volleys	P1	—
8	00:38	Volleys	P1	—
9	00:39	Volleys	P2	—
10	00:39	Volleys	P3	—
11	00:40	Volleys	P2	—
12	00:42	Volleys	P2	—
13	00:43	Volleys	P1	—
14	00:44	Volleys	P3	—
15	00:45	Dinks	P2	—
16	00:46	Volleys	P2	—
17	00:50	Dinks	P2	—
18	00:51	Volleys	P2	—
19	00:51	Volleys	P3	—
20	00:52	Volleys	P2	—
21	00:53	Drives	P2	~1 mph
22	00:54	Volleys	P2	—



CV360

PICKLEBALL AI · CONFIDENTIAL

25	01:00	Returns	P4	—
26	01:01	Volleys	P1	—
27	01:09	Dinks	P2	—
28	01:09	Volleys	P2	—
29	01:10	Volleys	P2	—
30	01:10	Volleys	P2	—
... 170 more events not shown				

CV 360 - PICKLEBALL AI

